

T4N

R3E



**Office of the Monroe County Surveyor**  
**Trohn Enright-Randolph**

---

Health Services Building  
119 West 7<sup>th</sup> Street  
Bloomington, IN 47404  
Phone: (812) 349-2570

Dear User,

The following images were obtained in 2017 by the Office of the Monroe County Surveyor from the State Imaging and Microfilm Laboratory at the Indiana State Archives. The field notes and plats for Jackson County are stored on microfilm Reel 7545 at the Indiana State Archives. Each page provided by the State Imaging and Microfilm Laboratory is approximately 18MB. Our office combined the pages by Township & Range and reduced the resulting pdfs. This process may have caused some degradation in quality. We will provide unreduced images of specific pages if required. Please contact us at 812-349-2570 or at [SurveyorsOffice@co.monroe.in.us](mailto:SurveyorsOffice@co.monroe.in.us) to request a higher quality image of any specific page.

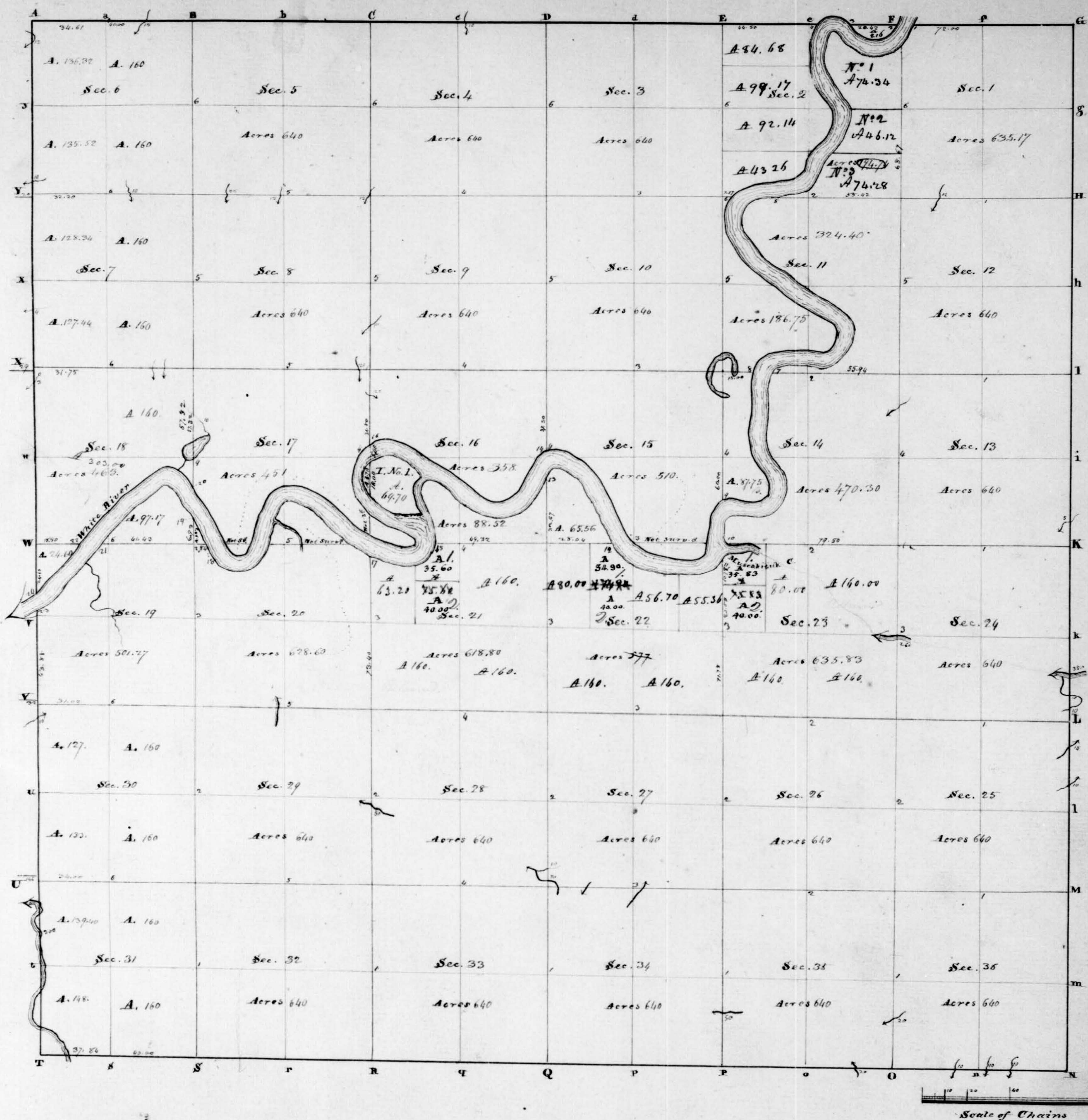
The pdfs are bookmarked with the original page numbers as assigned by the State Imaging and Microfilm Laboratory.

Be prepared to provide the county name, reel number, and the required page numbers when requesting full sized images.

If you would like a DVD of an entire county, please provide us with one DVD per county along with a self-addressed, stamped envelope.

Trohn Enright-Randolph  
Monroe County Surveyor





Township No. IV North of the Base Line, Range No. III East of the second Meridian. Surveyed by A. Henric & W. Harris. Island " " A. E. Van Ness, 1847.

Quality of the land on the interior section lines

Between sections	Quality of the soil & timber	Between sections	Quality of the soil & timber	Between sections	Quality of the soil & timber
35. 36	Part level, & part 3. rate hilly	27. 28	Level bottom, part low & wet. Beech -	19. 20	Bottom
25. 26	3. rate hills	22. 27	Hilly & rich; beech, sugar & poplar -	17. 20	
25. 26	same	21. 22	Hilly & poor; oak, chestnut & beech -	7. 18	Bottom
24. 25	same; Hickory, chestnut, oak &c	15. 22	Part hill & part bottom overflow	8. 17	Land flat; beech
23. 24	Part hills & part bottom	15. 16	Level land; beech, ash, hickory & walnut	7. 8	Good land; beech, oak & hickory
13. 24	Part level & part rolling; Beech, sugar, Walnut &c	10. 15	same	5. 8	same
12. 13	Rolling good farming land; Beech & sugar tree -	9. 10	same	5. 6	Hilly; beech, oak & hickory
11. 12	Bottom	3. 10	same	6. 7	same, very hilly
1. 12	West half 14. rate farming land	3. 4	same	7. 18	same
1. 2		22. 33	Level; Oak, beech & hickory -	18. 19	Bottom
34. 35	Part hills & part bottom	28. 33	Hilly & poor -	19. 30	
26. 35	Rolling land; oak, beech, ash &c	28. 29	part hilly & part bottom	30. 31	Hilly & poor; beech, oak & hickory
26. 27	3. rate hills	21. 28	same		
25. 26	very high & steep hills	20. 21	Creek bottom; part rich & good farming land		
22. 23	Part hilly & part rolling good soil	16. 21	same		
14. 23	Rich bottom	16. 17	same		
14. 15	Level rich land - beech, ash, hickory & walnut	9. 16	same		
11. 14	Part rate bottom	4. 9	Level; beech, sugar, oak, & poplar		
10. 11	Level rich land; beech, ash, hickory & walnut	4. 5	Very hilly; beech, oak & hickory		
2. 11	Level bottom; beech, sugar, Walnut &c	31. 32	Hilly & poor		
2. 3	Level rich land; Beech, ash, hickory & Walnut	29. 31	same		
33. 34	Part hilly & part bottom	29. 30	same		
27. 34	Creek bottom; part low & wet; Beech -	20. 29			



North Line continued  
 11.70 Poplar 15 Inchs dia.  
 40.00 Set a half mile post from which a Dogwood 6 Inchs dia. bears N 58 E 10 Links & a Beech 5 Inchs dia. bears S 6 W 3 Lks  
 49.00 Brook 20 Links wide course west.  
 80.00 Beech 6 Inchs dia. corner of sections N<sup>o</sup> 12 & 13 T<sup>h</sup> 3 R<sup>o</sup> 3 E - this mile over good farming ~~land~~ Land  
 Timber Oak, Poplar, Walnut, Ash & Beech - underbrush Spicewood -

North Line continued  
 110.00 Set half mile post from which a Chestnut 12 Inchs dia. bears N 65 W 6 Links, Chestnut 18 Inchs dia. bears S 26 E 28 Links  
 114.00 Brook 30 Links wide course West  
 118.00 Set Post corner of Town 3, 3<sup>rd</sup> 4<sup>th</sup> in Ranges 3<sup>rd</sup> 4<sup>th</sup> East from which a Beech 12 Inchs dia. bears N 46 E 15 1/2 Links  
 & a W. Oak 8 Inchs dia. bears S 4 E 37 Links -

*S. Boundary of T. 4 N. R. 3 E. Random.*

West Between Towns N<sup>o</sup> 3 & 4 T<sup>h</sup> 3 R<sup>o</sup> 3 East on Random  
 25.00 Brook 10 Links wide course South West  
 33.50 Brook 10 Links wide course South West  
 50.00 Same Same  
 80.00 Set a temporary mile post - Timber oak, Hickory & Beech. Muddling soil -

West Line continued  
 24.50 Brook 20 Links wide course North West  
 40.00 Set a temporary half mile post  
 80.00 Set a temporary mile post - this mile over good land - Timber Beech & Poplar  
 West Line continued  
 40.00 Set a temporary half mile post  
 80.00 Set a temporary mile post - this mile over hilly land - Timber Oak & Hickory &

40.00 Set a temporary half mile post  
 80.00 Set a temporary mile post - Land the same -

West Line continued  
 40.00 Set a temporary half mile post  
 80.00 Set a temporary mile post - Land the same -

West Line continued  
 40.00 Set a temporary half mile post  
 77.34 Intersect the North & South Line 27 links south of Town corner - Land flat Timber Beech principally

*S. Boundary of T. 4 N. R. 3 E. corner.*  
 East On true line Between Towns N<sup>o</sup> 3 & 4 North, Range 3 East of 1<sup>st</sup> Meridian  
 37.84 Set the temporary half mile post on true line for 1/4 Sec. corner from which a Beech 15 Inchs dia. bears S 25 W 5 Links & an Ironwood 6 Inchs dia. bears N 23 W 15 Links -  
 77.84 Set the temporary mile post on true line for the corner of Sec. N<sup>o</sup> 31 & 32 T<sup>h</sup> 3 R<sup>o</sup> 3 E from which a W. Oak 10 Inchs dia. bears S 6 W 24 Links, a B. Oak 13 Inchs dia. bears N 6 E 8 Links -

East Line continued  
 40.00 Set the temporary half mile post on true line for 1/4 Sec. corner from which a Gum 12 Inchs dia. bears N 66 W 26 Links & a Sugar 15 Inchs dia. bears N 66 E 26 Links -  
 80.00 Set the temporary mile post on true line for the corner of Sec. N<sup>o</sup> 32 & 33 T<sup>h</sup> 3 R<sup>o</sup> 3 E from which a Hickory 10 Inchs dia. bears S 61 E 14 Links - a Hickory 10 Inchs dia. bears N 76 E 18 Links -

East Line continued  
 40.00 Set the temporary half mile post on true line for 1/4 Sec. corner from which a Beech 10 Inchs dia. bears N 52 W 6 Links & a W. Oak 20 Inchs dia. bears S 52 E 19 Links -  
 80.00 Set the temporary mile post on true line for the corner of Sec. N<sup>o</sup> 33 & 34 T<sup>h</sup> 3 R<sup>o</sup> 3 E from which a Dogwood 7 Inchs dia. bears S 76 W 21 Links & a B. Oak 10 Inchs dia. bears S 40 E 2 Links -



East Line continued Sec. 34.

- 40.00 Set the temporary half mile post on true line for  $\frac{1}{4}$  Sec. corner from which a Dogwood 6 inches dia. bears S 29 E 3  
 Links - a Dogwood 5 inches dia. bears N 19 W 27 Links -  
 80.00 Set the temporary mile post on true line for the corner of Sec. N. 34 T 35 R. 3 E from which a Beech 10 inches  
 dia. bears N 45 E 24 Links - a Beech 12 inches dia. bears S 22 W 23 Links -

East Line continued Sec. 35

- 40.00 Set the temporary half mile post on true line for  $\frac{1}{4}$  Sec. corner from which a Beech 10 inches dia. bears S 1 W 26  
 Links - Beech 6 inches dia. bears N 23 W 22 Links -  
 80.00 Set the temporary mile post on true line for the corner of Sec. N. 35 T 36 R. 3 E from which a Beech  
 15 inches dia. bears S 43 E 6 Links - a Beech 8 inches dia. bears S 8 1/2 W 8 Links -

East Line continued - Sec. 36

- 40.00 Set the temporary half mile post on true line for  $\frac{1}{4}$  Sec. corner from which a Beech 8 inches dia. bears  
 S 63 E 11 Links - a Hornwood 6 inches dia. bears N 73 W 25 Links -  
 80.00 Town corner -

Sept 28<sup>th</sup> 1866

S. Boundary L. & N. R. 4 Co. Random.

- East Between Towns 3 & 4 in Range 4 East on Random.  
 40.00 Set a temporary half mile post  
 42.00 Brook 16 Links wide course South -  
 68.00 Spring Run course, South -  
 80.00 Set a temporary mile post - This mile over broken land - Timber Oak, Hickory, Beech -

East Line continued

- 40.00 Set a temporary half mile post  
 60.00 Brook 10 Links wide course South, East -  
 79.00 Brook 10 Links wide course North, East  
 80.00 Set a temporary mile post - Land the same -

East Line continued

- 40.00 Set a temporary half mile post -  
 41.50 Brook 10 Links wide course North -  
 80.00 Set a temporary mile post - Land the same quality -

East Line continued -

- 40.00 Set a temporary half mile post -  
 51.50 Brook 10 Links wide course North, East -  
 75.00 Brook 100 Links wide course North, East -  
 80.00 Set a temporary mile post - Land the same -

East Line continued

- 17.50 Brook 10 Links wide course North -  
 40.00 Set a temporary half mile post -  
 56.50 Brook 15 Links wide course North -  
 80.00 Set a temporary mile post - Land the same quality -

East Line continued -

- 40.00 Set a temporary half mile post -  
 85.76 Intersected the N. W. S. line 5 Chains South of Town corner very hilly Land & very hilly high hills -

S. Boundary L. & N. R. 4 Co. corrected.

West on true line Between Towns N. 3 & 4 North, Range 4 East of 2<sup>nd</sup> Meridian -

- 40.00 Set the temporary half mile post on true line for  $\frac{1}{4}$  Sec. corner from which a Beech 6 inches dia. bears S 82  
 W 10 Links. N. Oak 15 inches dia. bears N 12 E 5 Links -  
 80.00 Set the temporary mile post on true line for the corner of Sec. N. 35 T 36 R. 4 East  
 from which a B. Oak 10 inches dia. bears N 15 W 14 Links. B. Oak 8 inches dia. bears N 16 W 23 Links -



West Line continued

40.00 Set the temporary half mile post on true line for  $\frac{1}{4}$  Sec. corner from which a Maple 40 inches dia. bears S 48 W 35 Links to Beech 15 inches dia. bears S 88 E 39 Links.

80.00 Set the temporary mile post on true line for the corner of Sec. N<sup>o</sup> 34 35 T. 4 N. R. 4 E. from which a Beech 10 inches dia. bears S 7 E 20 Links to Sugar tree 10 inches dia. bears N 7 W 10 Links.

West Line continued.

40.00 Set the temporary half mile post on true line for  $\frac{1}{4}$  Sec. corner from which a Sugar 15 inches dia. bears S 40 W 11 Links to Beech 4 inches dia. bears N 15 E 10 Links.

80.00 W. Oak 10 inches dia. corner of Sec. N<sup>o</sup> 33 34 T. 4 N. R. 4 E. East.

West Line continued.

40.00 Set the temporary half mile post on true line for  $\frac{1}{4}$  Sec. corner from which a Dogwood 6 inches dia. bears N 20 W 11 Links to Beech 8 inches dia. bears S 49 W 13 Links.

80.00 Set the temporary mile post on true line for the corner of Sec. N<sup>o</sup> 32 33 T. 4 N. R. 4 E. from which a Beech 5 inches dia. bears S 21 E 6 Links, an Dogwood 6 inches dia. bears S 76 W 11 Links.

West Line continued.

40.00 Set the temporary half mile post on true line for  $\frac{1}{4}$  Sec. corner from which a Beech 10 inches dia. bears S 87 W 2 Links to Poplar 15 inches dia. bears S 7 E 5 Links.

80.00 Set the temporary mile post on true line for the corner of Sec. N<sup>o</sup> 31 32 T. 4 N. R. 4 E. from which a W. Oak 18 inches dia. bears S 86 W 19 Links to Beech 10 inches dia. bears N 26 E 14 Links.

West Line continued.

40.00 Set temporary half mile post on true line for  $\frac{1}{4}$  Sec. corner from which a B. Oak 10 inches dia. bears N 12 W 9 Links, a B. Oak 12 inches dia. bears N 76 E 12 Links.

85.75 Town corner.

Sept 29 1886.

## E. Boundary L. 4 N. R. 3 E.

North Between Towns 484 in Ranges 374 East of 2<sup>nd</sup> Meridian.

40.00 Set a half mile post from which a B. Oak 10 inches dia. bears N 1 E 17 Links, B. Oak 12 inches dia. bears S 20 W 29 Links.

66.80 W. Oak 15 inches dia.

80.00 Set post corner of Sections N<sup>o</sup> 25 26 T. 4 N. R. 3 E. from which a Hickory 10 inches dia. bears S 52 E 9 Links to Dogwood 5 inches dia. bears S 32 W 2 Links. This mile over broken oak timbered land.

North Line continued

3.04 Beech 15 inches dia.

40.00 Set a temporary half mile post from which a Maple 10 inches dia. bears S 30 E 13 Links to Hickory 10 inches dia. bears N 60 W 11 Links.

48.45 Maple 15 inches dia.

58.30 Run 10 Links wide course North, East

67.00 Brook 15 Links course North, East

80.00 Set post corner of Sections N<sup>o</sup> 24 25 T. 4 N. R. 3 E. from which a Sugar 6 inches dia. bears S 20 E 8 Links to Beech 6 inches dia. bears N 3 W 17 Links. Last half mile over level beech land.

North Line continued

1.50 Brook 10 Links wide course East

11.50 Brook 10 Links wide course North, West

18.50 Brook 3.50 Links wide course West

27.55 Beech 15 inches dia.

40.00 Set a half mile post from which a Beech 20 inches dia. bears S 49 E 4 Links to Hickory 10 inches dia. bears S 65 W 12 Links.

70.65 B. Oak 40 inches dia.

80.00 Set post corner of Sec. N<sup>o</sup> 24 25 T. 4 N. R. 3 E. from which a Beech 10 inches dia. bears S 60 E 8 Links

to Beech 10 inches dia. bears N 80 W 12 1/2 Links. This mile over good level Beech timbered land.



North Line continued

5.50 Brook 5 Links wide course South, West

28.50 Beech 15 Inches dia.

40.00 Set a half mile post from which a Beech 6 Inches dia. bears S 52 W 16 Links & a gum 20 Inches dia. bears N 14 W 11 Links

70.10 W. Oak 20 Inches dia.

80.00 Set post corner of Sec. N. 13 W. 14 T. 4 N. R. 3. E. from which a Beech 20 Inches dia. bears S 2 E 29 Links to Beech 21 Inches dia. bears N 57 W 17 Links. Level Beech Timbered Land Underbrush Spruce

North Line continued

100.00 Set a half mile post from which a Hickory 20 Inches dia. bears N 85 E 16 1/2 Links & a Dogwood 6 Inches dia. bears N 55 W 3 Links

36.15 W. Oak 15 Inches dia.

80.00 Set post corner of Section N. 14 W. 12 T. 4 N. R. 3. E. from which a Dogwood 6 Inches dia. bears S 60 E 2 Links to W. Oak 10 Inches dia. bears S 57 W 19 Links over brushy level Oak Timbered Land

North Line continued

40.00 Set a half mile post from which a Hickory 20 Inches dia. bears S 25 W 14 Links & a W. Oak 10 Inches dia. bears N 42 W 7 Links

80.00 Set post corner of Towns 4. 4. 5 W. 15 in Ranges 374 East from which a W. Oak 40 Inches dia. bears S 30 E 32 Links to Beech 10 Inches dia. bears S 60 W 29 Links. this mile over level Oak & Hickory Timbered Land very brush

S. Boundary T. 5. N. R. 4 E. Random

West Between Towns 4 & 5 North. Range 3 East of 2<sup>nd</sup> Meridian

27.00 20 Inches dia.

40.00 Set a half mile post from which a Locust 15 Inches dia. bears S 80 E 40 Links to Beech 20 Inches dia. bears N 52 E 21 1/2 Links

72.00 Set post corner of Section N. 36 T. 5 N. R. 3 E. on the Indian boundary on the Bank of W. River from which a W. Oak 20 Inches dia. bears N 20 E 16 Links & a Hickory 20 Inches dia. bears S 30 W 11 Links this mile over Rich level land under brush Sprucewood

S. Boundary T. 5. N. R. 4 E. Random

East Between Towns 4 & 5 Range 4 East on Random

40.00 Set a temporary half mile post

80.00 Set a temporary mile post over Rich level Oak & Hickory Timbered Land

East Line continued

110.00 Set a temporary half mile post

80.00 Set a temporary mile post Sand the same quality

East Line continued

27.00 Spring course South, East

32.25 Spring run 5 Links course South East

35.00 Spring run 5 Links wide course South, West

40.00 Set temporary half mile post

80.00 Set a temporary mile post Level Oak & Hickory Timbered Land

East Line continued

11.00 Brook 10 Links wide course South

40.00 Set a temporary half mile post

43.00 Brook 20 Links wide course South

50.00 Brook 50 Links wide course South, West

80.00 Set a temporary half mile post Level Land

East Line continued

10.50 Brook 10 Links wide course North, West

40.00 Set a temporary half mile post

80.00 Set a temporary mile post this mile over very thin broken soil. Timber Oak hills very high



T 3 N, R 5 E.

6	5	4	3	2	1
7	8	9	10	11	12
18	17	16	15	14	13
19	20	21	22	23	24
30	29	28	27	26	25
31	32	33	34	35	36

See Vol. 1, "Town Lines"

T. 4 N, R. 3 E. Continued from Vol. 1

40.00 Set half mile post - From which an Elm 36 S. 2 bears 12 links - And a H. Oak 20 S. 9 bears S 66 E 39 links.

20.00 Set Post Corner to Sect. 11, 12, 13 & 14 T. 4 N. R. 3 E - From which a Hickory 2 S. 2 bears N 74 E 17 links - And a Beech 7 S. 2 bears S 24 W. 19 links - The first half mile rolling - The east river Bottom - Timber same first rate farming land.

East. On a Random Line between Sections 12 & 13 T. 4 N. R. 3 E

40.00 Set temporary 1/4 Sect. post.

78.24 Intersected N & S line 1.23 links North of Section Corner - Land Rolling - Timber Beech, Oak, Poplar &c - Good farming land.

West. On a True line between Sections 12 & 13 T. 4 N. R. 3 E.

39.42 Set temporary post at average distance for 1/4 Section Corner - From which a Poplar 20 S. 2 bears S 35 E 9 links - And a Beech 12 S. 2 bears N 26 W. 23 links.

West. Between Sections 11 & 14 T. 4 N. R. 3 E.

40.00 Set half mile post - From which a Hackberry 20 S. 2 bears S 3 E 20 links - And a Hickory 11 S. 2 bears S 38 W. 3 links.

53.96 To the river) Set post corner to Sections 11 & 14 T. 4 N. R. 3 E - From which a Maple 6 S. 2 bears N 40 E 16 links - And an Elm 8 S. 2 bears S 23 E 33 links - This mile first rate Bottom - Timber Buckeye, Hackberry, Walnut, Elm, Locust &c - This Bottom overflowed in time of high water.

North Between Sections 11 & 12 T. 4 N. R. 3 E.

20.00 Set half mile post - From which a Beech 5 S. 2 bears S 25 E 14 links - And another 10 S. 2 bears N 28 W 19.

20.00 Set Post Corner to Sections 1, 2 & 11, 12 T. 4 N. R. 3 E - From which a Beech 11 S. 2



Township 12 N. North Range N. 3 East of the Meridian Continued.

bears S 69 W 7. And another S. I. D. bears N 1 E 15 links. This wide river bottom good farming land. Timber Beech, Sugar, Ash, Walnut &c.

West. Between Sections 2911 & 2912 S. I. N. 73 E.

40.00 Set half mile post. From which a W. Walnut 12 I. D. bears N 36 E 25 links. And a Beech S. I. D. bears S 65 W. 34 links.

55.52 (To the river) Set post corner to Sect. 2911 S. I. N. 73 E. From which a Beech S. I. D. bears S 2 W 2 links. And a W. Beech 6 I. D. bears S 21 W 6 links. Land and Timber same good farming land.

East. On a Random Line between Sections 1912 & 1913 S. I. N. 73 E.

18.50 A Creek 12 links wide Course South.

40.00 Set Temporary 1/4 Sect. post.

79.00 Intersected N. I. S. line 106 links North of Sect. corner. The first half mile first rate farming land. Well Timbered.

West. On a True line between Sections 1912 & 1913 S. I. N. 73 E.

39.50 Set temporary post at average distance for 1/4 Section corner. From which a Sugar S. I. D. bears S 6 E 4 links. And a Hickory W. I. D. bears N 2 W. 17 links. To Section corner.

North. Between Sections 1912 & 1913 S. I. N. 73 E.

40.00 Set half mile post. From which a Beech 20 I. D. bears S 77 W. 3 links. And another 24 I. D. bears S 19 E 73 links.

62.62 (To the river) A Beech 10 I. D. for corner to Sections 1912 & 1913 S. I. N. 73 E. This wide river bottom. Timber Beech, Sugar, Poplar, Ash, Walnut &c. Undergrowth spruce. Good farming land.

North. Between Sections 3333 & 3334 S. I. N. 73 E.

40.00 A Sugar 9 I. D. for 1/4 Section corner.

20.00 Set post corner to Sections 2792 & 2793, 3333, 3334 S. I. N. 73 E. From which a Beech 12 I. D. bears N 26 W. 7 links. And another 18 I. D. bears S 80 E

Township 12 N. North Range N. 3 East of the Meridian Continued.

37 links. The first half mile very hilly. The last bottom. Timber Beech, Sugar, Oak, Poplar &c. The last half mile middling good farming land.

East. On a Random Line between Sections 2793 & 2794 S. I. N. 73 E.

4.00 A Creek 50 links wide Course North.

20.00 A Creek 50 links wide Course S. W.

47.00 A Creek 50 links wide Course N. E.

78.22 Intersected N. I. S. line 1.22 links South of Section corner. This wide Creek bottom. The first half mile good farming land. The last low wet. Timber principally Beech.

West. On a True line between Sections 2793 & 2794 S. I. N. 73 E.

39.11 Set Temporary post at average distance for 1/4 Section corner. From which a Beech 12 I. D. bears S 19 W 24 links. And another 24 I. D. bears N 16 E 30 links.

73.22 To Section corner.

North. Between Sect. 2792 & 2793 S. I. N. 73 E.

4.50 A Creek 50 links wide Course —

9.00 A Creek 10 links wide Course N. W.

40.00 Set half mile post. From which a Beech 24 I. D. bears S 42 E 31 links. And a W. Oak 27 I. D. bears N 62 W. 3

80.00 Set post corner to Sections 21, 22 & 27, 28 S. I. N. 73 E. From which a W. Oak 15 I. D. bears S 12 E 19 links. And another W. I. D. bears N 32 W 29 links.

The first 3/4 of this wide Creek bottom rather low and wet. The last 1/4 hilly about middling farming land. Timber principally Beech, Open woods.

East. On a Random Line between Sections 2292 & 2293 S. I. N. 73 E.

40.00 Set Temporary 1/4 Section post.

79.53 Intersected N. I. S. line 24 links South of Section corner. This wide hilly good soil. Timber Beech, Sugar, Poplar, Oak &c. Poor farming land.



Township N<sup>o</sup> 4 North Range N<sup>o</sup> 3 East of the Meridian Continued.

West. On a true line between Sections 22 & 27 T. 4. N. R. 3 E.  
39.76 Set Temporary post at average distance for  $\frac{1}{2}$  Section corner. From which a Chestnut Oak 27 I. D bears S 22 E 30 - And an Iron wood 10 I. D bears S 47 E 17 links.

79.53 To Section corner. C. 15

North Between Sections 21 & 22 T. 4. N. R. 3 E.

40.00 Set half mile post - From which a Beech 18 I. D bears S 20 E 19 links - And a Sugar 10 I. D bears N 1 E 29 links.

80.00 Set Post corner to Sections 15, 16 & 21, 22 T. 4. N. R. 3 E. - From which a W. Co 27 I. D bears S 30 W 17 links - And another 27 I. D bears N 27 E 6 Links - Land hilly - Timber Oak, Beech, Chestnut &c. Poor farming land. C. 40

East. On a Random line between Sections 15 & 22 T. 4. N. R. 3 E.

22.04 (To the River) Set post corner to Sections 15 & 22 T. 4. N. R. 3 E. - From which a Beech 11 I. D bears N 42 W. 20 links - And an Elm 6 I. D bears S 57 E 12 Links - This line past river hills - And past Bottom - The Bottom is about 5 chains wide good soil - Timber Beech, Sugar, Poplar &c.

North Between Sections 15 & 16 T. 4. N. R. 3 E.

10.00 A small Lake 10 chains wide.

32.67 (To the River) Set post corner to Sect. 15 & 16 T. 4. N. R. 3 E. - From which a Sycamore 6 I. D bears N. 33 E 18 links - And another 6 I. D bears S 20 W 1 links - Over first rate bottom which overflows - Very Brushy.

May 30<sup>th</sup> 1807

North Between Sections 32 & 33 T. 4. N. R. 3 E.

40.00 Set half mile post - From which a Dogwood 7 I. D bears S 18 W 11 links - And a Beech 5 I. D bears N 1 E 24 links

80.00 Set post corner to Sect. 22, 27 & 32, 33 T. 4. N. R. 3 E. - From which

Township N<sup>o</sup> 4 North Range N<sup>o</sup> 3 East of the Meridian Continued.

a Beech 5 I. D bears S 61 E 2 links - And a Hickory 13 I. D bears N. W 9 Links - This mile Muddling level - Timber Oak, Hickory, Poplar, Beech &c. Muddling farming land. C. 40

East On a Random line between Sections 22 & 33 T. 4. N. R. 3 E.

40.00 Set temporary  $\frac{1}{2}$  Section post.

20.30 Intersected N. D. S. line 111 links North of Sect. corner - Land hilly Timber same Poor farming land.

West. On a True line between Sections 22 & 33 T. 4. N. R. 3 E.

40.13 Set Temporary post at average distance for  $\frac{1}{2}$  Section corner - From which a Dogwood 6 I. D bears S 6 W 13 links - And another 2 I. D bears N 32 E 6 links

20.30 To Section corner.  $\frac{1}{2}$

North Between Sections 22 & 29 T. 4. N. R. 3 E.

35.00 A Creek 30 links wide course S. W.

40.00 Set half mile post - From which a Beech 18 I. D bears S 15 E 12 links - And another 18 I. D bears N 11 E 9 links.

71.50 A small spring Branch course S. W.

20.00 Set post corner to Sections 20, 21 & 28, 29 T. 4. N. R. 3 E. - From which a Beech 6 I. D bears S 63 W 12 links - And another 15 I. D bears N. 57 E 42 links - The first half mile land and Timber same - The last Creek Bottom - And middling farming land.

East. On a Random line between Sections 21 & 28 T. 4. N. R. 3 E.

40.00 Set Temporary  $\frac{1}{2}$  Sect. post.

42.00 A small creek course S. W.

79.02 Intersected N. D. S. line 30 links North of Section corner - This mile part hilly and past Creek Bottom - The three first  $\frac{1}{2}$  miles - Good farming land Soil very rich.



Township N. 4. North Range. N. 3 E of the Meridian Continued.

- West. On a true line between Sections 21 & 23 T. 4 N. R. 3 E.
- 39.81 Set temporary post - at average distance for  $\frac{1}{4}$  Section corner - From which a W. Walnut 12 I. D bears N 61 E 22 Links - And a Beech 7 I. D bears S 69 W 17 Links.
- North Between Sections 20 & 21 T. 4 N. R. 3 E.
- 40.00 Set half mile post - From which a Beech 13 I. D bears S 43 W 13 Links - And a Hickory 4 I. D bears N 2 W 19 Links.
- 73.26 (In the River) Set post corner to Sections 20 & 21 T. 4 N. R. 3 E. - From which a Beech 10 I. D bears S 36 W 6 Links - And a Dogwood 6 I. D bears N 22 E 12 Links. This mile hilly very rich soil - Timber Beech, Sugar, Oak, Poplar - Some Mulberry and Walnut - Mistaking good farming land.
- May 31<sup>st</sup> 1807  
7.00
- North Between Sections 31 & 32 T. 4 N. R. 3 E.
- 40.00 Set half mile post - From which a Beech 11 I. D bears S 34 W 17 Links - And another 6 I. D bears N 3 W 21 Links.
- 20.00 Set post corner to Sections 29, 30, 31, 32 T. 4 N. R. 3 E. - From which a Poplar 15 I. D bears N 68 W 4 Links - And a Hickory 7 I. D bears S 26 E 15 Links. This mile hilly & poor - Timber Oak & Hickory.
- East. On a Random Line between Sections 29 & 32 T. 4 N. R. 3 E.
- 40.00 Set temporary  $\frac{1}{4}$  Sect. post.
- 77.50 Intersected N. D. S. line 1.36 Links South of Sect. corner - Land and Timber same.
- West. On a True Line between Sections 29 & 32 T. 4 N. R. 3 E.
- 39.75 Set temporary post at average distance for  $\frac{1}{4}$  Section corner - From which a Beech 5 I. D bears S 37 W. 9 Links - And a Sycamore 13 I. D bears N 27 E 1 Link.
- 79.50 To Section corner.
- 6.40
- West Between Sections 30 & 31 T. 4 N. R. 3 E.

Township N. 4. North Range. N. 3 E of the Meridian Continued.

- 40.00 Set half mile post - From which a W. Oak 15 I. D bears S 77 E 12 - And a Dogwood 6 I. D bears West 22 Links.
- 74.00 Intersected N. D. S. line 1.66 Links South of Sect. corner - From which intersection a Beech 1 I. D bears S 88 E 18 Links - And another 16 I. D bears S 31 E 12 Links. Land very hilly - Timber Beech, Sugar, Poplar, Oak, Hickory &c - Poor farming land.
- 74
- North Between Sections 29 & 30 T. 4 N. R. 3 E.
- 40.00 Set half mile post - From which a W. Walnut 13 I. D bears S 29 E 22 Links - And an Iron wood 5 I. D bears N 31 E 8 Links.
- 20.00 Set post corner to Sections 19, 20, 29, 30 T. 4 N. R. 3 E. - From which a Beech 12 I. D bears N 18 W 11 Links - And another 11 I. D bears S 20 E 46 Links - The first half mile the same - The last rolling and good farming land.
- East. On a Random line between Sections 20 & 29 T. 4 N. R. 3 E.
- 32.00 A Creek 60 Links wide course N. W.
- 40.00 Set temporary  $\frac{1}{4}$  Section Post.
- 78.53 Intersected N. D. S. line 1.38 Links North of Section corner - This mile Creek Bottom - The first half mile rather low and wet - The last rich and very good farming land - Timber Beech, Sugar, Poplar, Ash &c.
- West. On a True line between Sections 20 & 29 T. 4 N. R. 3 E.
- 39.26 Set temporary post at average distance for  $\frac{1}{4}$  Section corner - From which a Beech 12 I. D bears N 13 E 22 Links - And a Beech 5 I. D bears S 30 E 19 Links.
- 78.53 To Section corner.
- June 1<sup>st</sup> 1807  
6.40
- West. Between Sections 16 & 21 T. 4 N. R. 3 E.
- 40.00 Set half mile post - From which a Sugar 13 I. D bears N 33 E 20 Links - And another 18 I. D bears S 24 W 26 Links.



Township N. 4. North Range N. 3 East of the Meridian Continued

29.32 (To the River) 12 Sycamore 14 S. 2 for Corner to Sections 16 & 21 - 34 N. 73 E.  
This mile River Bottom - Good good farming land - Timber Beech, Sugar,  
Ash &c.

North. Between Sections 19 & 20 34 N. 73 E.

40.00 1/2 half mile post - From which a Beech 13 S. 2 bears N 36 E 8 Links  
And another 14 S. 2 bears S 53 W 32 Links.

80.00 1st post corner to Sections 17, 18 & 19, 20 34 N. 73 E. - From which a  
Sugar 11 S. 2 bears N 36 E 4 Links - And a H. Oak 13 S. 2 bears N 32 W  
22 Links - This mile Bottom land the first half mile - The Timber is  
principally Beech - The last half mile 1st rate Bottom - Timber Locust,  
Buckeye, Elm, Walnut &c. Good farming land.  
E. 40

East. On a Random line between Sections 17 & 20 34 N. 73 E.

2.24 (To the River) 12 Sugar 6 S. 2 for corner to Sections 17 & 20 34 N. 73 E. - Land same.  
E. 40

North. Between Sections 17 & 18 34 N. 73 E.

6.94 (To the River) 1st post corner to Sections 17 & 18 34 N. 73 E. - From which  
a Sycamore 42 S. 2 bears S 10 E 13 Links - And a Beech 14 S. 2 bears N 39 W.  
20 Links Land same. E. 40

West. Between Sections 18 & 19 34 N. 73 E.

40.00 1st half mile post - From which a Beech 20 S. 2 bears S 29 W. 7 Links  
And another 38 S. 2 bears N 9 E 29.

41.43 (To the River) 1st post corner to Sections 17 & 18 34 N. 73 E. - From  
which an Elm 14 S. 2 bears S 30 W. 8 Links - And a H. Oak 5 S. 2 bears  
N 33 E 12 Links - This mile first rate Bottom - Timber Hackberry  
Locust Walnut &c. E. 40

West. Between Sections 17 & 30 34 N. 73 E.

40.00 1st half mile post - From which a Beech 9 S. 2 bears S 3 W 12 Links.

Township N. 4. North Range N. 3 East of the Meridian Continued.

And a Sugar 12 S. 2 bears N 23 W 6 Links.

71.02 Intersected N. 2. 1 line 32 Links South of Sect. corner - From which intersection  
a Sugar 12 S. 2 bears S 55 W 18 Links - And another 14 S. 2 bears N 31 E 12 Links.  
This mile Bottom - Good farming land - Timber Beech, Sugar, Poplar &c.

Meanders of White River in Town 4 N. 71 2 E - Commenced at the NW  
corner of Section 19 34 N. 73 E. Thence down the river on Sec. 24 34 N. 72 E.

Course	Dist.	Remarks	Course	Dist.	Remarks
S 49 W	3.00		N 39 W	3.00	
S 60 W	5.30		N 19 W	7.00	
S 70 W	10.00		N 5 E	2.30	
S 36 W	2.50		N 13 E	4.50	
N 77 W	2.50		N 2 W	11.00	
N 61 W	1.00		N 52 W	7.72	
N 70 W	7.00		S 52 W	11.10	
West	4.50		S 33 W	4.40	
S 52 W	4.00		South	2.50	
S 36 W	11.50		S 49 W	7.50	
S 12 W	2.50		S 64 W	11.73	A Creek 100 Links wide.
S 62 W	6.50		S 71 W	3.27	
S 35 W	3.50		N 70 W	1.00	
N 83 W	5.50		West	14.75	
N 70 W	2.50		N 65 W	2.00	
N 54 W	5.50		West	4.75	
N 22 W	1.76	To Corner to Fraction	S 70 W	3.50	
		23 & 24 34 N. 72 E.	S 55 W	3.76	

5.71 W  
5.72 E 2.10



Township N. 4 North, Range N. 3 East 2<sup>nd</sup> Mer.

Subdivisions N. W. of White River		South	Between Sec. 3 & 4
South	Between Sec. 3 & 4 from the corner of Sec. 3 & 4 Range 3 E	40.00	gr. Sec. corner Beech 10 S 24 E 20
40.00	gr. Sec. corner Beech 7 S 38 W 11	80.00	Sugar 10 S 34 W 9
	Ironwood 6 S 34 E 3		Set post corner to Sec. 3, 4, 9, 10
80.00	Set post corner of Sec. 2, 3, 10, 11		Beech 20 S 27 E 22
	Beech 8 S 30 E 20		N. Ash 20 S 43 W 22
	Beech 8 S 5 E 19		Land Beech, Beech, Oak, Hickory &c
East	Between Sec. 2 & 11	East	Between Sec. 3 & 10
4.17	Set post on the River Bank	40.00	Temporary gr. Sec. post
	Ironwood 6 S 37 W 9	80.00	Intersected N & S line of 1/4 Sec. of corner
	Hickory 12 S 41 W 24		Land & Timber Same
	Land the Same	West	Corrected
South	Between Sec. 10 & 11	40.00	Temporary gr. Sec. post
16.25	A. Sugar 10 in. diam?		Maple 15 S 76 W 20
40.00	gr. Sec. corner Beech 20 S 57 W 5		Beech 12 S 25 E 5
	Sugar 10 S 85 E 27	80.00	Section corner
73.00	A. Pond 200 lbs S. W. & S. E	South	Between Sec. 9 & 10
80.00	Set post corner of Sec. 10, 11, 14, 15	40.00	gr. Sec. corner Beech 10 S 9 W 15
	Beech 9 S 26 E 6		Ironwood 6 S 18 W 18
	B. Oak 27 S 26 W 21	80.00	Set post corner of Sec. 9, 10, 15, 16
	Land & Timber Same		Hickory 10 S 71 E 21
East	Between Sec. 11 & 14		Beech 10 S 7 W 25
10.00	A. Pond 200 lbs South		Land the Same
15.00	Set post on River Beech 8 S 38 W 22	East	Between Sec. 10 & 15 On Brandon
	Hickory 10 S 75 W 21	40.00	Temporary gr. Sec. post
South	Between Sec. 15 & 14	76.00	A. Pond 3 chains wide
8.75	A. W. Ash 30 in. diam?	80.00	Intersected N & S line at Sec. corner
11.00	A. Pond 250 lbs S. E		Land the Same
40.00	gr. Sec. corner Ironwood 6 S 10 E 28	West	Corrected
	Hickory 20 S 83 E 13	40.00	gr. Sec. corner Hickory 12 S 31 E 15
60.00	A. Oak, Buck 8 in. diam. on the River Bank - Land the Same		Ironwood 6 S 33 W 10
		80.00	Section corner
		South	Between Sec. 15 & 16
		35.75	A. Lycamore 9 in. diam?
		37.50	Set post on River bank Hickory 10 S 15 W 8
			Land the Same

East	Between Sec. 18 & 19 from the corner of Sec. 13 & 24 Town 4 R 2 E	East	Between Sec. 9 & 16 On Brandon
18.50	Set post on the River Bank	40.00	Temporary gr. Sec. post
	W. Oak 24 S 64 W 31	79.36	Intersected N & S line 190 lbs S. of corner
	Elm 10 S 63 W 14		Good Richland Oak, Hickory & Walnut
	Land Rich & Live	West	Corrected
South	Between Sec. 14 & 5	39.68	gr. Sec. corner Hickory 6 S 42 W 21
40.00	gr. Sec. corner W. Oak 12 S 2 E 34		do 8 S 46 W 16
	Hickory 10 S 71 E 21	70.68	Section corner
75.90	A. Poplar 28 in. diam?	South	Between Sec. 16 & 17
79.00	A. Brook 10 lbs S. W	11.50	A. Brook 20 lbs S. E
80.00	Set post corner to Sec. 4, 5, 8, 9	36.50	No a Sugar 8 in. diam? corner on the River Bank. Land the Same
	Beech 28 S 20 W 37	South	Between Sec. 5 & 6
	do 9 S 88 E 10	40.00	gr. Sec. corner Beech 12 S 10 E 38
	Land very Hilly, Beech, Oak & Hickory		Hickory 20 S 4 E 43
East	Between Sec. 14 & 9 On Brandon	78.00	A. Brook 20 lbs S. E
20.00	River Bottom	80.00	Set post corner of Sec. 5, 6, 7, 8
40.00	Temporary gr. Sec. post		Beech 12 S 30 E 9
79.40	Intersected N & S line 95 lbs S. of corner		do 18 S 33 W 28
	Land low, Beech, Sugar, Oak & Poplar		Land Hilly, Beech, Oak & Hickory
West	Corrected	East	Between Sec. 5 & 8 On Brandon
39.70	gr. Sec. corner Beech 20 S 26 E 21	14.00	A. Brook 25 lbs South
	do 8 S 31 W 14	38.00	A. Brook 10 lbs S. W
70.40	Section corner	40.00	Temporary gr. Sec. post
South	Between Sec. 8 & 9	76.00	A. Brook 12 lbs S. W
40.00	gr. Sec. corner Beech 8 S 52 W 5	78.04	Intersected S 1/4 Sec. South of Sec. corner
	do 8 S 55 E 13		Land low, Beech, Oak & Hickory
60.00	A. Brook 10 lbs S. W	West	Corrected
63.75	A. Beech 20 in. diam?	39.02	gr. Sec. corner Beech 20 S 4 E 17
80.00	Set post corner to Sec. 8, 9, 16, 17		do 18 S 20 E 15
	Ironwood 8 S 8 W 13	78.04	Section corner
	Beech 24 S 19 W 33	South	Between Sec. 7 & 8
	Land Timber Beech land the last 2 miles	29.25	A. Oak 29 in. diam?
		40.00	gr. Sec. corner Sugar 10 S 84 W 12
			Beech 12 S 18 E 16



50.00 Let post corner to Sec 4 7.8.17.18  
W Oak 12 1/2 4 E 22  
Michoxy 10 1/2 38 N 72  
Land the same as last  
West Between Sec 4 & 5  
30.00 A. Brook 10 lbs S. E  
40.00 gr. Sec. corner Beech 10 1/2 30 N 18  
Sugar 5 1/2 30 E 7  
72.20 Let post on the West Boundary 20 lbs S. E. corner  
Beech 5 1/2 26 E 15  
do 6 1/2 43 N 7  
Land very Hilly, Oak & Michoxy  
West Between Sec 4 & 5  
17.00 A. Brook 10 lbs South  
43.00 A. Brook 10 lbs South  
40.00 gr. Sec. corner Sugar 10 1/2 4 E 12  
Poplar 8 1/2 48 N 11  
71.74 Let post on W. Boundary 20 lbs S. E. corner  
Beech 20 1/2 42 E 17  
do 8 1/2 15 E 10  
Land the same very Hilly  
East Between Sec 4 & 5 Sec. Boundary  
40.00 Temporary gr. Sec. post  
75.00 A. Brook 20 lbs South  
80.00 Intersected to line at the corner  
Flat Beech land  
West Corrected  
40.00 gr. Sec. corner Beech 6 1/2 4 N 11  
Sugar 12 1/2 85 N 6  
80.00 Section corner  
South Between Sec 4 & 5  
14.00 A. Brook 10 lbs S. E  
20.00 A. Brook 20 in. diam.  
33.50 A. Pond Course East

40.00 In the Pond  
42.50 S. E. Side of the pond  
57.33 No a Spigmore 20 inches diam. Corner  
on the River Bank  
Flat Beech land  
Surveyed by Arthur Henrie D. S.  
Meanders of Right  
Bank of White River in  
T. 4 N. R. 3 E. from post  
in W. Boundary, thence up stream.  
N 35 E 5.00 In Sec 17.  
N 32 E 18.00  
N 40 E 9.50 line between Sec 17 & 18.  
N 40 E 9.50 In Sec 18.  
N 51 E 35.00  
N 75 E 12.50  
S 35 E 8.00  
S 20 E 4.00 line between 17 & 18.  
S 27 E 36.00 In Sec 17.  
N 79 E 6.00  
N 24 E 9.50  
N 12 E 14.00  
N 38 E 14.50  
N 45 E 11.50  
S 66 E 14.00  
S 48 E 10.00  
S 32 E 14.50  
S 82 E 20.50  
N 86 E 5.77  
North 2.00  
N 44 N 10.00  
N 69 N 9.00  
N 52 N 4.50  
N 54 N 4.50  
N 34 N 8.50  
N 15 N 7.50  
N 11 E 9.00  
N 49 E 7.94 line between Sec 16 & 17

N 65 E 9.00 In Sec 16.  
S 77 E 12.00 at 5 chs a mark 25 lbs wide  
S 47 E 27.00  
S 15 E 22.50  
N 55 E 9.00  
N 15 E 11.00  
N 47 E 10.40  
N 73 E 1.96 line between 15 & 16.  
N 73 E 6.00 In Sec 15.  
S 65 E 12.00  
S 46 E 8.50  
S 23 E 28.50  
S 47 E 10.00  
S 68 E 9.00  
S 79 E 14.00  
N 32 E 9.50  
N 52 E 3.50  
N 4 E 6.50  
N 6 N 9.50  
N 35 E 6.90 line between 14 & 15  
N 50 E 7.00 In Sec. 14  
S 79 E 10.00  
N 50 E 11.00  
N 40 N 15.00  
N 30 N 13.00  
N 8 E 9.50  
N 9 N 8.50  
N 11 E 5.50  
N 22 E 2.50 line between 11 & 14.  
N 22 E 2.00 In Sec. 11.  
N 47 E 15.00  
S 84 E 10.00  
N 85 E 9.50  
N 47 E 8.10  
N 10 E 5.50  
N 35 N 6.00  
N 60 N 11.50  
N 70 N 10.00  
N 43 N 23.00  
N 56 N 15.00  
N 17 N 8.00  
North 7.00  
N 33 E 6.00 line between 2 & 11.  
N 40 E 9.00 In Sec 2.  
N 67 E 30.00  
N 33 E 9.00  
N 25 E 20.00  
N 13 E 6.00  
N 60 N 11.00  
N 23 N 9.50  
North 8.50 a Brook 25 lbs wide,  
North 4.50  
N 66 E 6.00 To N Boundary.  
N 66 E 8.50 In Sec 35, T. 5 N. R. 3 E.  
S 65 E 3.00  
S 60 E 5.00 To post on town line.  
S 60 E 12.50 In Sec 2, T. 4 N. R. 3 E.  
N 77 E 8.00  
N 25 E 4.80 To N Boundary at  
Cor of Sec. 35 & 36, in  
T. 5 N. R. 3 E.  
Arthur Henrie D. S.  
In Meanders of Left Bank  
See Vol II N & E. page 12  
In Survey of Island, T. 4 N. R. 3 E  
See page 37 of this Volume.